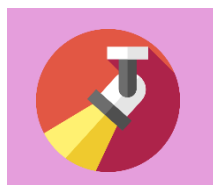


A Cost of Living newsletter for Calderdale support providers



In this wintery New Year edition...



Spotlight: The  
Old Library,  
Cornholme



Overview:  
Funeral  
Poverty



Other local  
Cost of  
Living news



Funding and  
grant  
support



Events,  
training, and  
activities



Useful  
contacts  
and more!



## Spotlight: The Old Library, Cornholme

The Old Library is at the centre of the community in Cornholme, which is home to approx. 1600 residents, many of whom live in deprivation. The Food Bank at the Old Library has been running for a number of years, and serves as a lifeline for local residents struggling to adequately feed themselves and their families. Open to all with no questions asked, the food support is run solely by a group of friendly and welcoming volunteers who open the doors every Monday morning to offer support and a warm space to have a cuppa and a biscuit, and collect a bag of food. Those in need can choose from a list of items (this adapts based on donations), along with 'extras' which is usually fresh items such as bread, pasta or fruit and vegetables. Relying mainly on donations, the food bank spend a small amount on food purchasing to ensure that they can make the offer as varied and healthy as possible.

There are a number of informative leaflets on display to offer wrap-around support and advice and The Old Library link with other services such as CAB to ensure the extra support is available. They also work closely with Todmorden Food Drop in, Calder Community Cares and Todmorden Foodshare (who also deliver food in the Cornholme and Portsmouth areas weekly)





# Overview: Funeral Poverty – Where and how to get financial support

**Funeral poverty:** A relatively recent term that is relating to the financial difficulty that paying for funerals can cause, and the challenges that can arise from it. According to the [Cost of Dying Report \(2025\)](#)...

A third of people say the cost of living crisis impacted how they planned and/or paid for a funeral.

2024 saw a record high for funeral costs. Since 2004, the price of a funeral has gone up 134%.

18% of families experience notable financial concerns when paying for a funeral.

The [Cost of Dying Report \(2025\)](#) is a really interesting read, if you have the time to go through it!

What support can be accessed to tackle funeral poverty and get support for funeral costs in Calderdale?



Voluntary & Community (VAC), in partnership with trustee Lucy Clay—who brings expertise in funeral care and Dr Georgina Robinson, a Postdoctoral

Research Associate from Durham University’s Department of Theology and Religion and Centre for Death-Life Studies, has launched a brand-new guide to support individuals navigating the challenges of planning a funeral.

The Funeral Planning and Financial Support Guide and further information is available from the website. VAC members can request physical copies to distribute to their service users. Please email [info@cvac.org.uk](mailto:info@cvac.org.uk) to do so or for more information.

### [New Support Guide Offers Practical Help for Funeral Planning – CVAC](#)

For more information around bereavement fees in Calderdale and to get a better idea of what the costs are to help with budgeting and funeral plans, their website has a list of costs: [Bereavement service fees | Calderdale Council](#)



[Calderdale Credit Union](#) can offer an interest-free loan of £500 to low-income households. This can be used to cover funeral costs for those who are struggling. For more information, contact the Credit Union directly on 01422 386060.

For those on certain benefits, who meet the eligibility criteria, there is a Funeral Expenses Payment that can help cover the costs of funerals. The Gov.UK website has more information on eligibility and how to apply: [Get help with funeral costs \(Funeral Expenses Payment\): How it works - GOV.UK](#)



[MoneyHelper](#) has plenty of guides, tools, and resources for those worrying about funeral costs and being able to afford them, or what happens afterwards. Pages include:

- [How much does a funeral cost?](#)
- [Help paying for a funeral](#)
- [Dealing with debts of someone who died](#)



## Cost of Living News: Food

Thank you to everyone who has submitted data, it's much appreciated. The link to the form is found [HERE](#) or numbers can be sent via email to Jane Woodcock: ([jane.woodcock@vsialliance.org.uk](mailto:jane.woodcock@vsialliance.org.uk)).

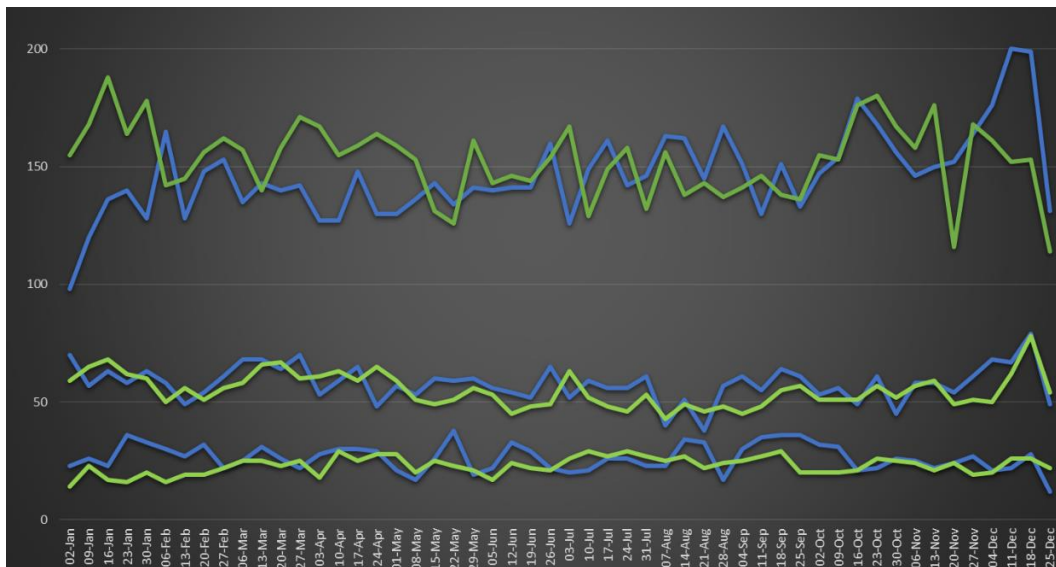


**Food Poverty forum reminder:** The next meeting will take place in March. Date and time TBC. Invitations will be sent out a couple of weeks before. If you are interested in attending please contact [jane.woodcock@vsialliance.org.uk](mailto:jane.woodcock@vsialliance.org.uk).

**[Food banks are a lifeline – but not the solution. There are better ways to tackle poverty in 2025](#)** – Interesting article in the Big Issue

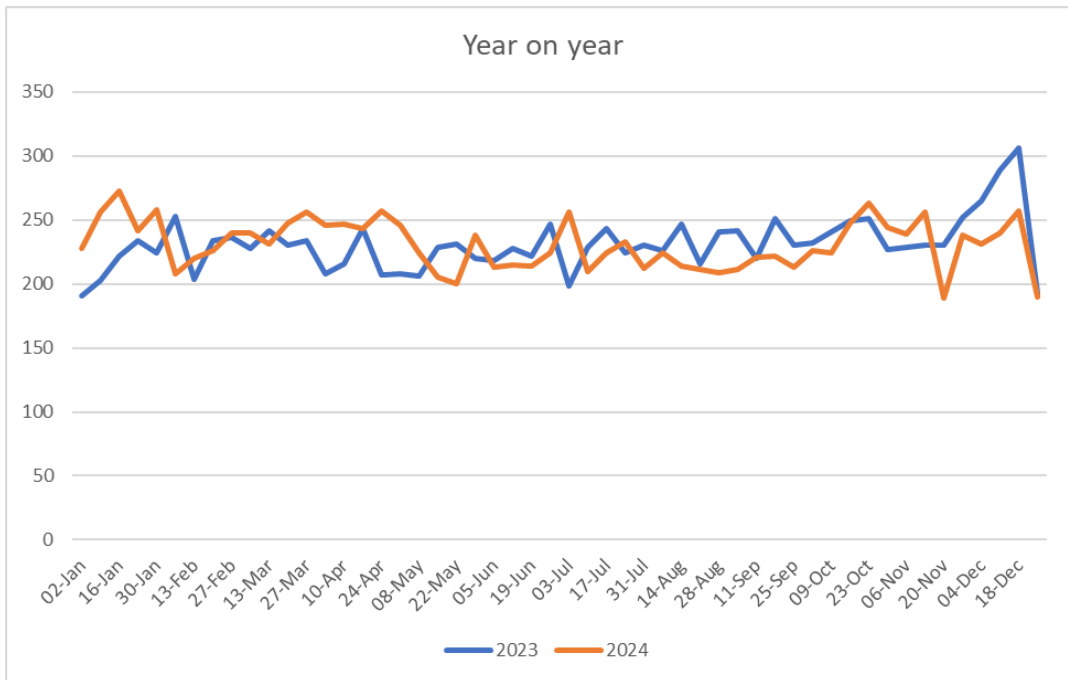
**Data Deep Dive** A huge thank you to everyone who provides regular data, it really helps to build a picture of the need across Calderdale. As we need have a full year of data, I have compared data from 2023 to 2024 of the organisations who have supplied regular data.

The first graph shows the number of parcels distributed from January to the end of December with the blue showing 2023 and the green 2024 at 3 separate food banks.



All follow a similar trend with peaks and troughs but show that the need has remained relatively consistent across the two comparable years.

The second graph shows the total of parcels given out by these 3 organisations over the same period



Again, showing similar trends, and interestingly almost the exact number of parcels were distributed both years, 12008 in 2023 and 12003 in 2024. In contrast Trussell reported a 4% increase in Food Parcels distributed in 2023/24 in comparison to 2022/23.

Link to the Trussell Information can be found at [EYS-UK-Factsheet-2023-24.pdf](#)



Happy Days are officially opening their Social Supermarket in the Old Salvation Army building, all invited!



## Cost of Living News: Affordable Energy and Utilities



Affordable Warmth forum reminder: The next meeting will be on the 30<sup>th</sup> January on Teams from 10am to 12pm. Please email Jayne Leech ([Jayne.Leech2@calderdale.gov.uk](mailto:Jayne.Leech2@calderdale.gov.uk)) if you need an invitation or more information.

To find the nearest Warm Space, use the [directory on Calderdale Council's website](#). If you have a warm space to register, or need to update any details, please contact [jayne.leech@calderdalecouncil.gov.uk](mailto:jayne.leech@calderdalecouncil.gov.uk).



Focus4Hope have opened a Centre for Warmth in partnership with Northern Gas Networks. It offers help, support and advice on keeping warm during the cost-of-living crisis. This includes support on energy efficiency, energy bills, the Priority Services register, and providing people with energy saving appliances. This is a drop-in that is open to all in Calderdale. They also have a Winter Warmer café

open every Thursday 12-2pm. More information can be found on their webpage: <https://focus4hope.co.uk/services/centre-for-warmth/>.

Citizens Advice have teamed up with the Energy Saving Trust to create a Winter Heating checklist for Energy Savers Week (January 20<sup>th</sup> to January 26<sup>th</sup>) to help people save money on their energy bills. The checklist can be found here: [Energy Savers Week 2025: Stay warm, spend less - Citizens Advice](#)



## Cost of Living News: Living Costs



St Augustine's are looking for donations of second hand, good quality warm blankets and duvets (single and double), winter coats for children as well as adults, and good quality footwear for all ages (especially larger sizes). They always need second-hand suitcases and everyday backpacks too. If you have any of these items that you can donate, please contact -

[arsalan.ghasemi@staugustinescentrehalifax.org.uk](mailto:arsalan.ghasemi@staugustinescentrehalifax.org.uk) to arrange delivery or drop off at their centre from Mon-Thurs, 9am-4pm.

Money Saving Expert has some handy tools around saving money when it comes to living costs, such as [How to stop spending money: Tips and tools to help you cut back - MSE](#) and [The Demotivator: stop you spending when you can't afford it](#).



## Cost of Living News: Money and Debt



Money and Debt forum reminder: The next meeting will be on the 6<sup>th</sup> February on Teams at 2pm to 4pm. Please email Rachel Stewart ([rachel.stewart@calderdale.gov.uk](mailto:rachel.stewart@calderdale.gov.uk)) if you need an invitation or more information.

Calderdale Adult Learning have a two-week course on 'Making your money go further'. The course will cover basic numeracy skills needed to budget effectively, learning how to prioritise payments, and more. There are currently two courses open to enrol on-one beginning on Monday 3<sup>rd</sup> February, and one beginning on Monday 10<sup>th</sup> March. They take place at Heath Campus in Halifax.

For more information and to enrol, go on their website: <https://new.calderdale.gov.uk/schools-and-learning/adult-learning/courses/make-your-money-go-further>



Overwhelmed by all the different types of benefits? Turn2Us have an A-Z list of different benefits with descriptions and eligibility criteria for each one. A handy tool to promote to people who aren't sure what they are entitled to and want to do their own research! Find it here: [Information about Benefits | Turn2us](#)



## Cost of Living News: Families and Children

Calderdale Lighthouse's current wish list for donations:



**Wish List**  
**20.1.25**  
**Clothing needed**

| <b>Boys</b>        | <b>Girls</b>       |
|--------------------|--------------------|
| 12-18 months       |                    |
| 18-24 months       | 18=24 months       |
| 2-3 years          | 4-5 years          |
| 3-4 years          | 5-6 years          |
| 4-5 years          | 6-7 years          |
| 5-6 years          | 8-9 years          |
| 6-7 years          | 10-11years         |
| 7-8 years          | 11+ years to teens |
| 11+ years to teens |                    |

**Only winter clothing please**

**Calderdale Lighthouse**  
**Unit F**  
**Empire House**  
**(at the back of the building)**  
**Mulcture Hall Road**  
**hx11sp**  
**Monday to Thursday**  
**9.30 to 1pm**



**Wish List**  
**20.1.25**  
**Equipment needed**

**Travel systems**  
**Prams**  
**Stroller/Buggys**  
**Cot**  
**High chairs**  
**Safety gates**  
**Thank you**

**NO TOYS / BOOKS OR TEDDIES PLEASE**

**Calderdale Lighthouse**  
**Unit F**  
**Empire House**  
**(at the back of the building)**  
**Mulcture Hall Road**  
**hx11sp**  
**Monday to Thursday**  
**9.30 to 1pm**



In 2024, Calderdale Lighthouse completed 996 referrals, and supported 4,113 family members. They also had a very successful Christmas project. A big well done to them and all of their hard work!

Mothershare completed their Christmas project and helped over 700 of Calderdale's most disadvantaged children and young people to celebrate Christmas. A big well done to them and their teams, and those who helped out!



## Cost of Living News: Other



The 2025 VCSE Directory is out now! As well as including information to support people during Winter, the 2025 Directory is now a year-round resource, providing information on local support from Calderdale VCSE Sector Organisations. Order your physical copies by emailing: [info@cvac.org.uk](mailto:info@cvac.org.uk). Or access it online at: <https://vsialliance.org.uk/vcse-directory-2025/>

Halifax Opportunities Trust have workplaces to rent at the Hanson Lane Enterprise centre. Money raised from their business centres goes towards supporting the projects of Halifax Opportunities Trust which helps them continue to support the local community. Find out more here: [Industrial Units to Rent in Halifax - Halifax Opportunities Trust](#)



AgeUK Calderdale and Kirklees are looking for help to meet their [Big Knit target](#). Individuals or craft groups can knit or crochet some little hats and drop them into their shop in Halifax. Each hat sold helps them continue to support older people in Calderdale & Kirklees and offer vital services such as Befriending, Podiatry and Digital Champions as well as our activity groups. Hats must be returned to them by the start of July 2025.

## Funding and Grants

Click on the links to find out more!

### [Tesco Stronger Starts Grant](#)

- Up to £1,500
- Every three months, three local good causes are selected to be in the blue token customer vote in Tesco stores throughout the UK.
- No deadline specified.

### [CFFC General Grants](#)

- Up to £5,000
- Grants for projects relating to **Homelessness and Housing, Poverty and Disadvantage, Mental Health and wellbeing, Community Cohesion** and the Environment: **contribution to the Calderdale Carbon Zero Strategy**.
- Deadline: Thursday 27<sup>th</sup> March, 10am.

### [CFFC Support and Integration Fund](#)

- Up to £5,000
- Grants for organisations to: Foster language learning and social connections; Promote understanding between communities; Celebrate the benefits of diversity; Provide employment and life skills support; Create spaces for shared learning and cultural exchange.
- Deadline: 20<sup>th</sup> February, 12 noon.

### [Coral Samuel Charitable Trust](#)

- Up to £5,000.
- Grant for registered charities carrying out **educational, welfare and cultural projects**.
- Deadline not specified.

### [COSARAF – Hardship Grant](#)

- Up to £2,000.
- The Foundation's trustees give priority to: the most **financially excluded people**, families over individuals, those with caring responsibilities, items that will make the most difference to the individual/family's long-term future.
- Other than in exceptional cases, Hardship Grants will only be made available for: **Household items** (white goods and occasionally other items i.e. sofas, wardrobes etc.), **Basic Living Expenses** (Utilities or food), **Work- or education-related expenses** (interview clothes, school uniforms, laptops), **Rent arrears and Council tax arrears**, but only where there is a clear and obvious risk of homelessness (for rent arrears involving a social landlord please outline what support has already been offered to your tenant), **Contribution to immigration-related costs**, where the current immigration status directly causes financial hardship to the applicant.
- No deadline specified.

### Money Saving Expert Charity – Summer Projects

- Up to £10,000
- Funding is to help groups deliver activities within the UK that improve people's ability to become more financially capable in the present and future circumstances in the summer. Examples include: **Money management workshops**; Training volunteers to deliver workshops or to provide peer-support to others; Upskilling existing staff to access **financial capability training** to support their end-users directly; **Provide access to financial inclusion activities for people who are disadvantaged** in anyway such as by age, disability, ethnicity or gender.
- Deadline: 31<sup>st</sup> January, 5pm.

### Leeds Building Society – Safe and secure housing

- Between £250-£100,000.
- Funding for UK registered charities for projects that address one or more of the following themes: **Financial Stress** – Projects that help with bills or debt stress. Security and Refuge – **Projects that support emergency accommodation. Quality and suitability of housing. Health and wellbeing for those experiencing homelessness** if it is part of wraparound support and the application also meets at least one of the other themes.
- Deadline: 10<sup>th</sup> February.

### Delamere Dairy Foundation

- Up to £5,000.
- Funding for charities and other organisations based in England whose purposes fit with any of the following themes: The advancement of agriculture and of environmental protection; The advancement in **life of young people by developing their capabilities so that they may mature as contributory members of society**; The **relief of financial hardship**; The advancement of education; The relief of sickness.
- Deadline: 28<sup>th</sup> February.

### Blackwood Engineering Trust

- Up to £2,000.
- For: Projects which benefit **young people who experience disadvantage or inequality in the UK.**
- No deadline specified.

### Yorkshire Building Society Charitable Foundation - Small Change Big Difference Fund

- Up to £2,500.
- For: Registered charities and good causes in local communities across the UK to **alleviate poverty, improve health and save lives.** Must be nominated by a Yorkshire Building Society member or colleague.
- Deadline: 31<sup>st</sup> March.



### Anton Jurgen's Charitable Trust

- Up to £10,000.
- For: Smaller charities supporting **socially disadvantaged groups and individuals in the UK.**
- No deadline specified.

### Ashworth Charitable Trust Grant

- Up to £5,000, usually £3,000.
- For: Charities supporting those members of society who may be considered as **isolated, vulnerable, at risk or disadvantaged, Homeless Shelters, Women's Refuges, and more.**
- No deadline specified.

## Events and Training

### Calderdale Valley of Sanctuary – Bespoke Training sessions

- The training includes what it means to seek asylum, the local picture for asylum seekers in Calderdale, tips for dealing with language barriers and cultural difference, tips for dealing with the issue of trauma surrounding forced migration and the asylum system, and a short overview of the regulations around volunteering for people who are seeking asylum.
- Contact Blake at [membership@calderdale.cityofsanctuary.org](mailto:membership@calderdale.cityofsanctuary.org) to book your session!

### Go for Growth training programme

- Go4Growth provides the tools and resources to help smaller organisations develop the skills and confidence to grow your business/organisation. Their fully-funded programme includes tailored training, useful digital content and templates as well as access to events, 1:1 mentoring and much more to make you and your organisation Public Sector Supply Ready.
- For more information, click on the link above.

### Money Guiders

- The Money Guiders scheme is a City and Guilds accredited course, online and free, and can give service providers and volunteers guidance skills around talking to clients about financial worries. There are financial incentives for completing the foundation and technical domains.
- For more information, please email Rachel Stewart ([rachel.stewart@calderdale.gov.uk](mailto:rachel.stewart@calderdale.gov.uk)).

## Free events and activities for service users, clients, and customers

### Healthy Holidays – February Half-Term

- Various times and dates throughout February half term. Click the link above to find out more!

### Walks at The Space at Field Lane

- Monday and Wednesdays, 7am morning walk, and 6pm evening walk.
- The Space @ Field Lane, 3, Burnsall Road, Brighouse HD6 3JT.
- For more information, contact 01484 556924 or [gemma@thespaceatfieldlane.org.uk](mailto:gemma@thespaceatfieldlane.org.uk).

### The Growth Workshops – Inna Nature (with North Halifax Partnership)

- Every Tuesday, 11am-1pm: Forest Cottage, Cousin Lane, Ovenden, HX28AD
- Weekly creative drop-in workshops. Free or suggested donation £3-£5.
- Book a place: [innanaturecic@gmail.com](mailto:innanaturecic@gmail.com)

### Phoenix Men's Shed – Social Space

- Every Monday and Wednesday, 9:30am – 4pm: Shaw Lodge Mill, Shaw Lane, HX3 9ET (opposite the top of Boys Lane)
- They have a comfortable Social Area and Workshop, so there's something for everyone. The Shed is primarily aimed at men over 55 or those who may be socially isolated. Phoenix Men's Shed is a non-profit charity.
- Call during opening hours on 07867 510945 or email at [phoenixshed@gmail.com](mailto:phoenixshed@gmail.com). Find their Facebook page here: [Phoenix Mens Shed Halifax | Facebook](#)

### Healthy Minds Drop-in Sessions

- Wednesdays, 12:30pm – 2:30pm: Roomfield Baptist Church, Todmorden, OL14 5BE.
- Fridays, 10am – 12pm: Healthy Minds Office, 1 King Street, Halifax, HX1 1SR.
- Safespace Sundays, 1pm – 3pm: Healthy Minds Office, 1 King Street, Halifax, HX1 1SR.
- What's on: Support or friendly informal chats, 18+ only. Free event, refreshments provided. Email [info@healthymindscalderdale.co.uk](mailto:info@healthymindscalderdale.co.uk) for more information.

## Useful information and contacts

To submit anything to the newsletter, or to ask for more information, please contact [jane.woodcock@vsialliance.org.uk](mailto:jane.woodcock@vsialliance.org.uk) (Food Poverty Coordinator) for food-related queries, or [tia.metcalfe@cvac.org.uk](mailto:tia.metcalfe@cvac.org.uk) (Cost of Living Coordinator) for any others. For more information on Calderdale forums and regional anti-poverty work, contact [antipovertyaction@calderdale.gov.uk](mailto:antipovertyaction@calderdale.gov.uk) or [jayne.leech2@calderdale.gov.uk](mailto:jayne.leech2@calderdale.gov.uk).

For help finding grants and funding, and writing bids, contact [gary.gordon@cvac.org.uk](mailto:gary.gordon@cvac.org.uk).

If you would like a bespoke news story written about a case study from your organisation promoting some of the amazing work you have been doing, contact [jordan.baker@cvac.org.uk](mailto:jordan.baker@cvac.org.uk) who is the Community Journalist at VSI Alliance for more information.

To sign up to the Anti-Poverty partnership newsletter on cost of living and tackling poverty, please sign up [here](#).



**VSI ALLIANCE Calderdale Cost of Living**

**How to find us:**

SCAN ME!

VSI Alliance Website - Projects

 @VSIAllianceCOL on Twitter (X)

 VSI Alliance COL on Facebook

Useful Information, services and news to support you with the cost of living in Calderdale





The VSI Alliance is a partnership of six organisations